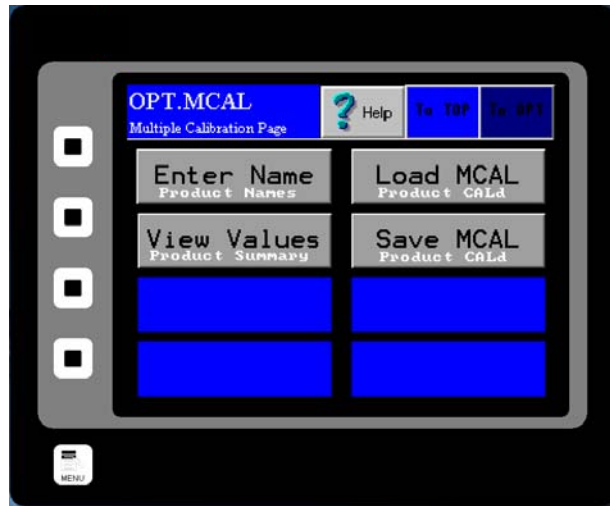


Setup of Multiple Calibration Screens (Optional)

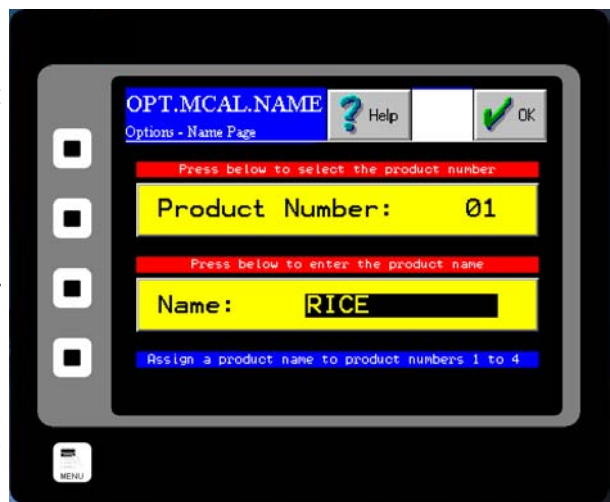
The Multiple Calibration Screens option allows you to run more than one product through your meter without having to recalibrate each time the product is switched. This option allows you to store up to 4 product calibrations at one time. To access the option once it has been purchased, press the MULTIPLE CAL Button from the TOP.OPT page, accessed by pressing the OPTIONS button from the TOP Menu. You will now be at the screen shown below.

From this screen, you are able to differentiate your different products by assigning them names and Dynamic Calibrations that are specific to each product. You can also choose the Calibration you will be using from this menu.



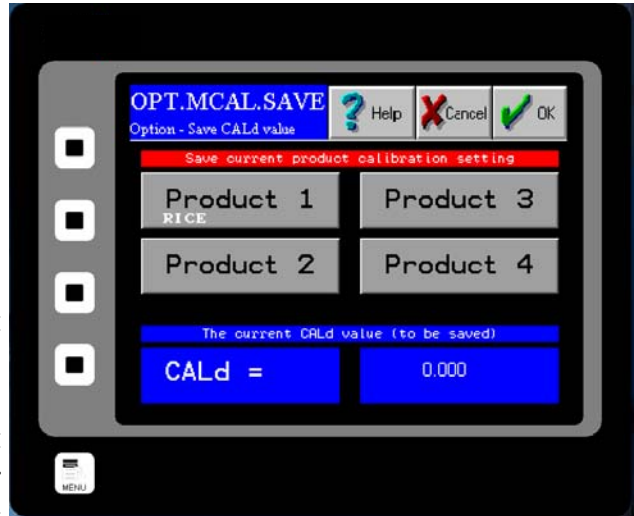
Step 1: The first step is to enter names and positions for each of your products. To do so, press the ENTER NAME Button. You should now see this screen (Right). Double click the presently entered value for Product Number and you will be prompted to enter your new product number. Pressing the RAISE and LOWER Buttons will allow you to change this value. You can choose numbers 1-4 for the 4 separate product calibrations that can be entered. Press the ENTER Button once you have entered your value.

Step 2: You can now assign the product calibration a name. Often, the name of the product itself is used, but any name can be used. Double click the presently entered value for Name and you will be prompted to enter your product's name. When finished, press the ENTER Button and then, press the OK Button in the Upper Right hand corner.



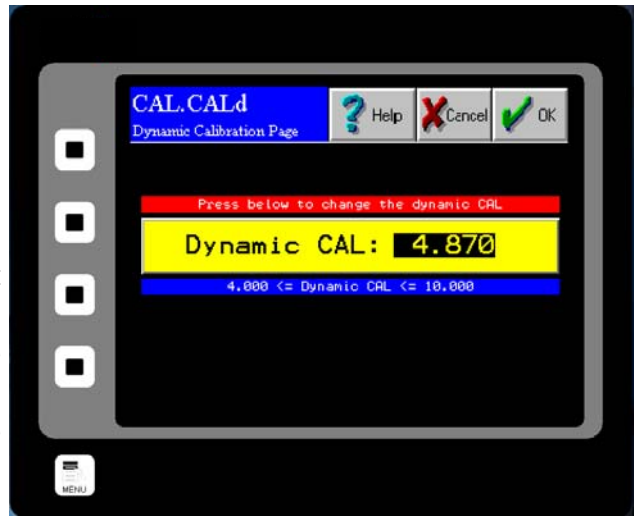
****Please note that it is important to choose the product number before pressing the OK Button or you will continue to over write the last products' information that you entered.***

Step 3: Now you should enter your calibrations for each of the products that you have assigned with names. You should have been returned to the OPT.MCAL Menu. If not return there now and press the SAVE MCAL Button. You should now see this screen (Right). Your Digital Electronics' current Dynamic Calibration value is displayed in the lower right hand corner. If this is the correct dynamic calibration for your particular product press that product's corresponding button and press OK. Please note that if more than one product will have the same Dynamic Calibration, they must be entered one at a time from this page.



Step 4: If the current Dynamic Calibration is not correct for your particular product and you would like to change it, or none has been specified, you can either enter one manually or you can calculate another value by running a Site Calibration. To run a Site Calibration, please see the Site Calibration section of the Procedures section of this manual.

Step 5: To enter a Dynamic Calibration manually, return to the main TOP Menu and press the CAL Button and then, press the CALd Button. You should now see this screen (Right). Double click the current value for Dynamic Calibration and enter your new value. Press the ENTER Button when finished and then, press the OK Button in the Upper Right hand corner.



Step 6: Once the value is entered return to the OPT.MCAL.SAVE as described above and save the new current Dynamic Calibration to the selected product. Repeat this process for all of your products, up to 4.

Step 7: To access any of your saved Dynamic Calibrations for running your process, simply click the LOAD MCAL Button from the OPT.MCAL page and chose the product that is currently running. Press the OK Button located in the Upper Right hand corner.